

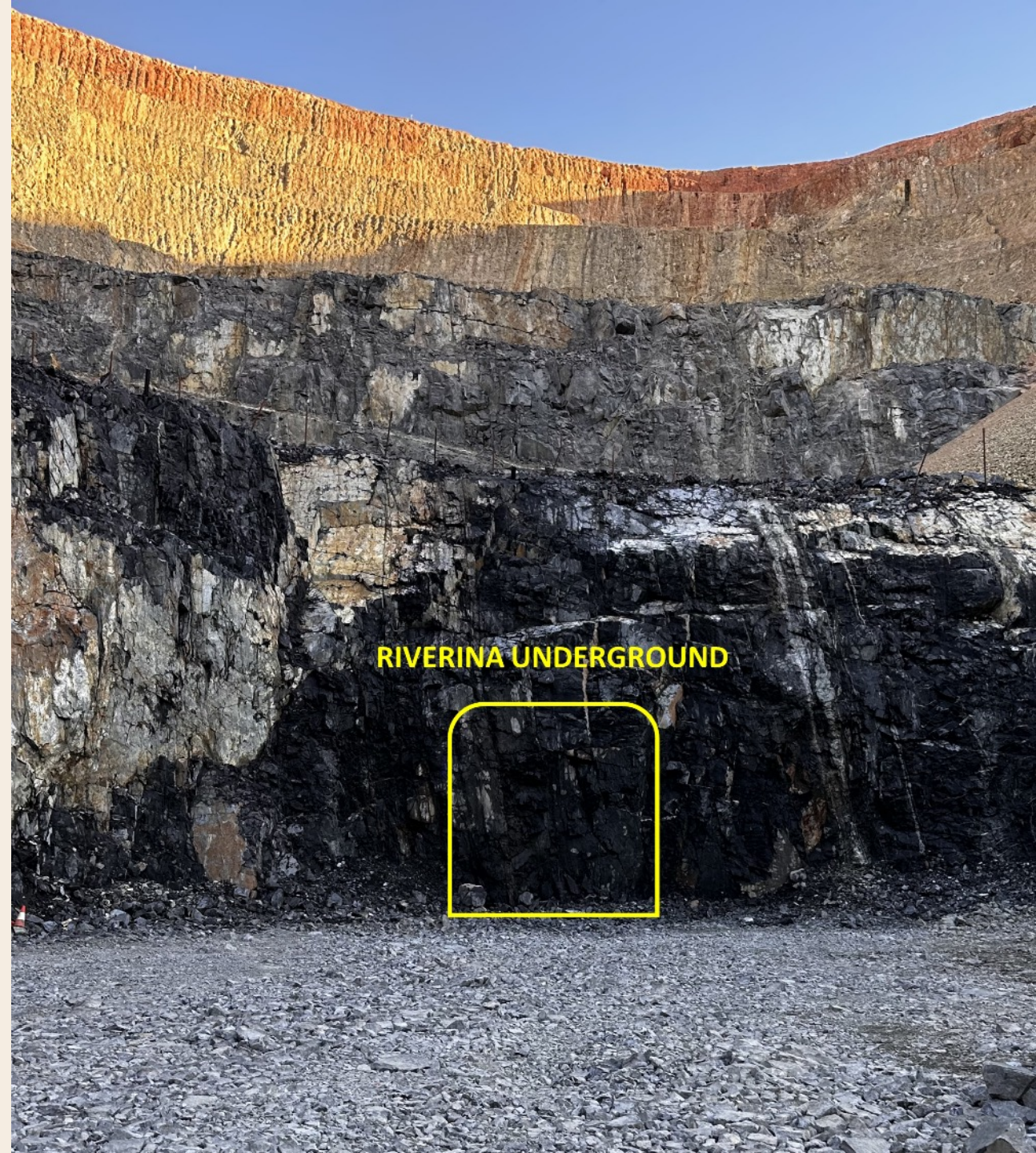


# The DRIVE to 100

## OBM Corporate Presentation

Luke Creagh  
Managing Director

17 February 2023



# Forward Looking Statements

## IMPORTANT NOTICE AND DISCLAIMER

This Presentation contains summary information about the Company and its activities which is current as at the date of this Presentation. The information in this Presentation is of a general nature and does not purport to be complete nor does it contain all the information which a prospective investor may require in evaluating a possible investment in the Company or that would be required in a prospectus or product disclosure statement prepared in accordance with the requirements of the Corporations Act.

The information contained in this presentation is a summary only and does not purport to be complete. It should be read in conjunction with the Company's other periodic and continuous disclosure announcements lodged with the Australian Securities Exchange, which are available at [www.asx.com.au](http://www.asx.com.au).

The historical information in this Presentation is, or is based upon, information that has been released to the Australian Securities Exchange (ASX). This Presentation should be read in conjunction with the Company's other periodic and continuous disclosure announcements lodged with the ASX, which are available at [www.asx.com.au](http://www.asx.com.au).

## Forward-looking Statements and Forecasts

This Presentation contains certain "forward-looking statements" and comments about future matters. Forward-looking statements can generally be identified by the use of forward-looking words such as, "expect", "anticipate", "likely", "intend", "should", "could", "may", "predict", "plan", "propose", "will", "believe", "forecast", "estimate", "target", "outlook", "guidance" and other similar expressions within the meaning of securities laws of applicable jurisdictions. Indications of, and guidance or outlook on production or financial position or performance are also forward-looking statements. You are cautioned not to place undue reliance on forward-looking statements. Any such statements, opinions and estimates in this Presentation speak only as of the date hereof (unless otherwise stated) and are based on assumptions and contingencies subject to change without notice, as are statements about market and industry trends, projections, guidance and estimates. Forward-looking statements are provided as a general guide only. The forward-looking statements contained in this Presentation are not indications, guarantees or predictions of future performance and involve known and unknown risks and uncertainties and other factors, many of which are beyond the control of the Company, and may involve significant elements of subjective judgement and assumptions as to future events which may or may not be correct.

There can be no assurance that actual outcomes will not differ materially from these forward-looking statements. A number of important factors could cause actual results or performance to differ materially from the forward-looking statements. The forward-looking statements are based on information available to the Company as at the date of this Presentation.

Except as required by law or regulation (including the ASX Listing Rules), the Company undertakes no obligation to supplement, revise or update forward-looking statements or to publish prospective financial information in the future, regardless of whether new information, future events or results or other factors affect the information contained in this Presentation (unless otherwise stated).

This presentation is not financial product, investment advice or a recommendation to acquire the Company securities and has been prepared without taking into account the objectives, financial situation or needs of individuals. Before making an investment decision prospective investors should consider the appropriateness of the information having regard to their own objectives, financial situation and needs, and seek legal, taxation and financial advice appropriate to their jurisdiction and circumstances. The Company is not licensed to provide financial product advice in respect of its securities or any other financial products. Cooling off rights do not apply to the acquisition of the Company securities.

## Disclaimer

The Company and its related bodies corporate and each of their respective directors, agents, officers, employees and advisers expressly disclaim, to the maximum extent permitted by law, all liabilities (however caused, including negligence) in respect of, make no representations regarding, and take no responsibility for, any part of this presentation and make no representation or warranty as to the currency, accuracy, reliability or completeness of any information, statements, opinions, conclusions or representations contained in this presentation. In particular, this presentation does not constitute, and shall not be relied upon as, a promise, representation, warranty or guarantee as to the past, present or the future performance of the Company.

# Disclaimers



Information regarding Exploration Results for Riverina Underground is set out in the ASX announcement 'Riverina Resource & Reserve Update' dated 16 February 2023. The Company confirms that it is not aware of any new information or data that materially affects the information included in that announcement.

Information regarding Exploration Results for Callion is set out in ASX announcements dated 24 October 2016, 10 January 2017, 20 February 2017, 31 August 2017, 28 January 2020. The Company confirms that it is not aware of any new information or data that materially affects the information included in that announcement and that all material assumptions and technical parameters underpinning the Mineral Resource and Ore Reserve estimates in that announcement continue to apply and have not materially changed.

The information in this announcement that relates to Mineral Resources and Ore Reserves for Riverina Underground are set out in the Company's ASX announcement, 'Riverina Resource & Reserve Update' dated 16 February 2023. The Company confirms that it is not aware of any new information or data that materially affects the information included in that announcement and that all material assumptions and technical parameters underpinning the Mineral Resource and Ore Reserve estimates in that announcement continue to apply and have not materially changed.

The information in this announcement that relates to Mineral Resources for all deposits other than Riverina Underground are set out in the Company's ASX announcement, 'Mineral Resource and Reserve Statement' dated 1 August 2022. The Company confirms that it is not aware of any new information or data that materially affects the information included in that announcement and that all material assumptions and technical parameters underpinning the Mineral Resource estimates in that announcement continue to apply and have not materially changed.

Information regarding Ore Reserves for Riverina Open Pit, Waihi, Callion, Missouri, Sand King and Iguana open pit deposits and the Davyhurst Gold Project are set out in the Company's ASX announcement, 'Mineral Resource and Reserve Statement' as announced on 1 August 2022. The Company confirms that it is not aware of any new information or data that materially affects the information included in that announcement and that all material assumptions and technical parameters underpinning the Ore Reserve estimates in that announcement continue to apply and have not materially changed.

# Project Overview

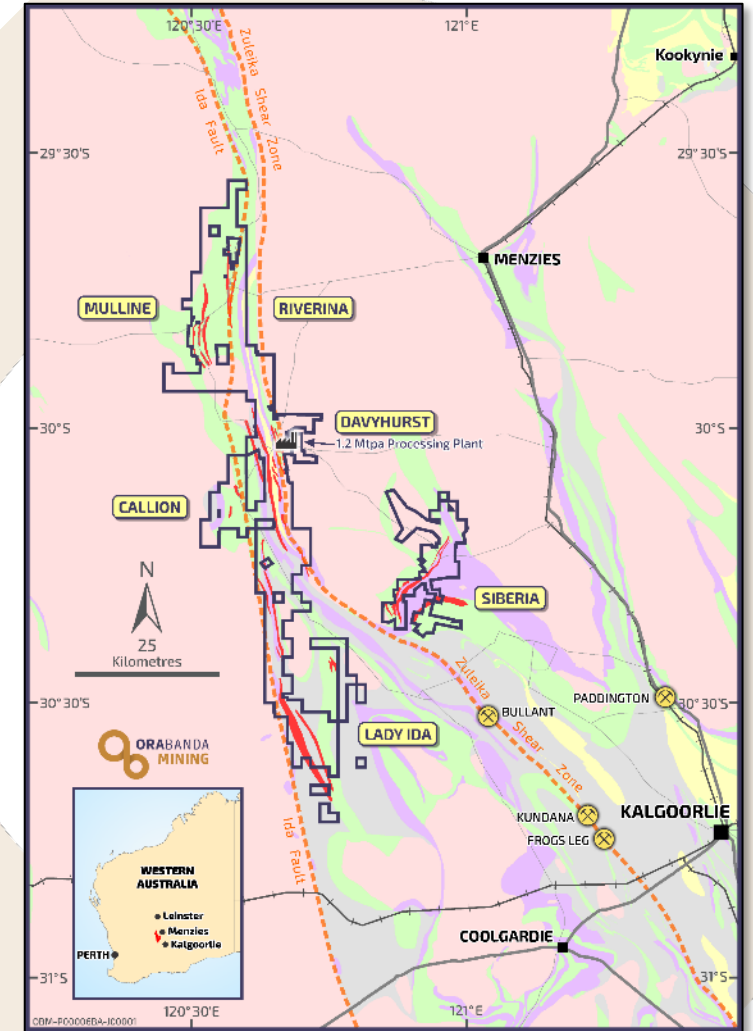
OBM Davyhurst tenements are located ~100km north-west of Kalgoorlie and are centred on the following key project hubs:

- Siberia & Davyhurst
- Riverina & Mulline
- Callion & Lady Ida

These project hubs include:

- ~1,200 square kilometre land holding over 130km length
- >120km combined strike of defined mineralised trends
- 92 granted tenements
- Historical production ~1.4Moz Au since 18971
- Current Resource base of 2.0Moz at an average grade of 2.5g/t<sup>2</sup>
- Centrally located processing plant of 1.2Mtpa at Davyhurst

The tenement package is highly prospective including the central Davyhurst area which covers the convergence of two regional significant deep-seated structures, the Zuleika Shear and the Ida Fault



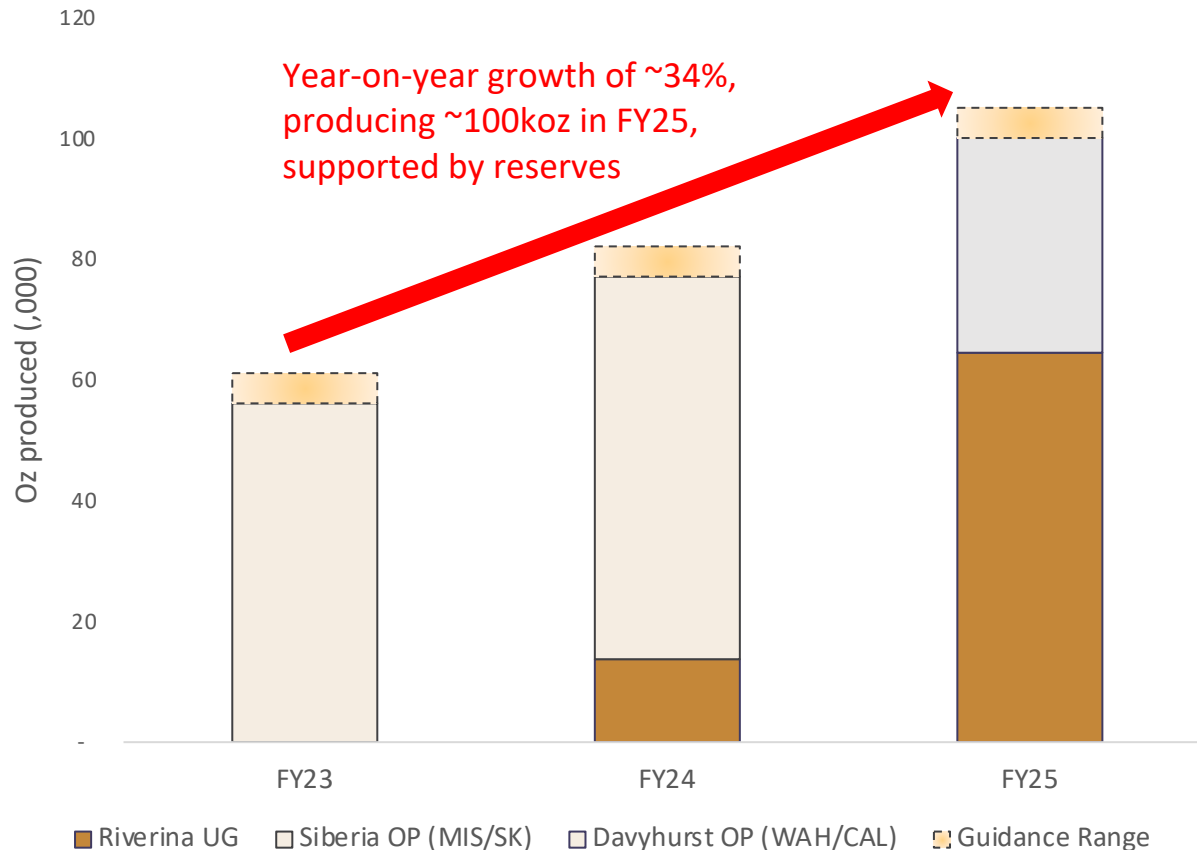
1 Historical production figures sourced from internal Company Records (updated from Monarch Gold 2008)

2 For further details ASX Announcement dated 1 August 2022 and 16 February 2023

# The DRIVE to 100 – Production Target >100kozpa in FY25



Forecast Oz Produced  
FY23 to FY25



- The Company has potential to achieve a production profile above 100koz per annum <sup>1</sup>
- This is a result of the strategy delivering the Riverina Underground Project, with the higher reserve grade of 4.3g/t has the potential to materially increase production and lower costs
- Production target is underpinned by Reserves,\* with further production and reserve growth expected from resource conversion
- Portal location for the underground is exposed and ready, approvals in place and notification for mining has been sent with ability to commence from 27 March 2023
- Schedule demonstrates >600ktpa of ore is achievable and sustainable from Riverina underground\*
- The current underground Resource of more than 300,000oz is open in all directions and a Phase 2 drilling program will target extensions to the mineralisation envelope further south and at depth

<sup>1</sup> Subject to Riverina FID and the assumptions set out in the ASX announcement dated 16 February 2023

# Value Creation – OBM’s Three Year Strategy

## Short Term

### Focus on the fundamentals

- Improve mining operating capability to deliver performance as planned
- Achieve processing nameplate of 1.2Mtpa
- Review mine plans to maximise value
- Cost reduction initiatives resourced and pursued with intent
- **Gold price used for Reserve calculations reduced from A\$2,200/oz to A\$1,850/oz – adds value to Reserve base and increases focus on higher-margin ounces**
- Generate free cashflow to fund organic opportunities
- **Over \$10M committed to Resource Definition and Exploration – including focus on higher-grade underground targets**

## Medium Term

### Leverage organic opportunities

- Continuous improvement in operations to increase production & lower unit costs → increase in margin & cashflow
- Improve performance metrics; leverage off existing infrastructure and achieve above 1.2Mtpa nameplate capacity
- Lower unit costs increases the value of every Resource ounce, including higher conversion to Reserve → longer mine lives off existing resources
- **Increase investment into exploration activities**
- **Identify higher grade ore sources and progress to mine plan**

## Longer Term

### Performance drives growth

- **Bring higher-margin mines online**
- Cashflow supports infrastructure expansions; this will further enhance project economics and margins
- Ability to bring on large, high-margin open pits
- Free cashflow continues investment in exploration to also test high-grade mineralisation at depth

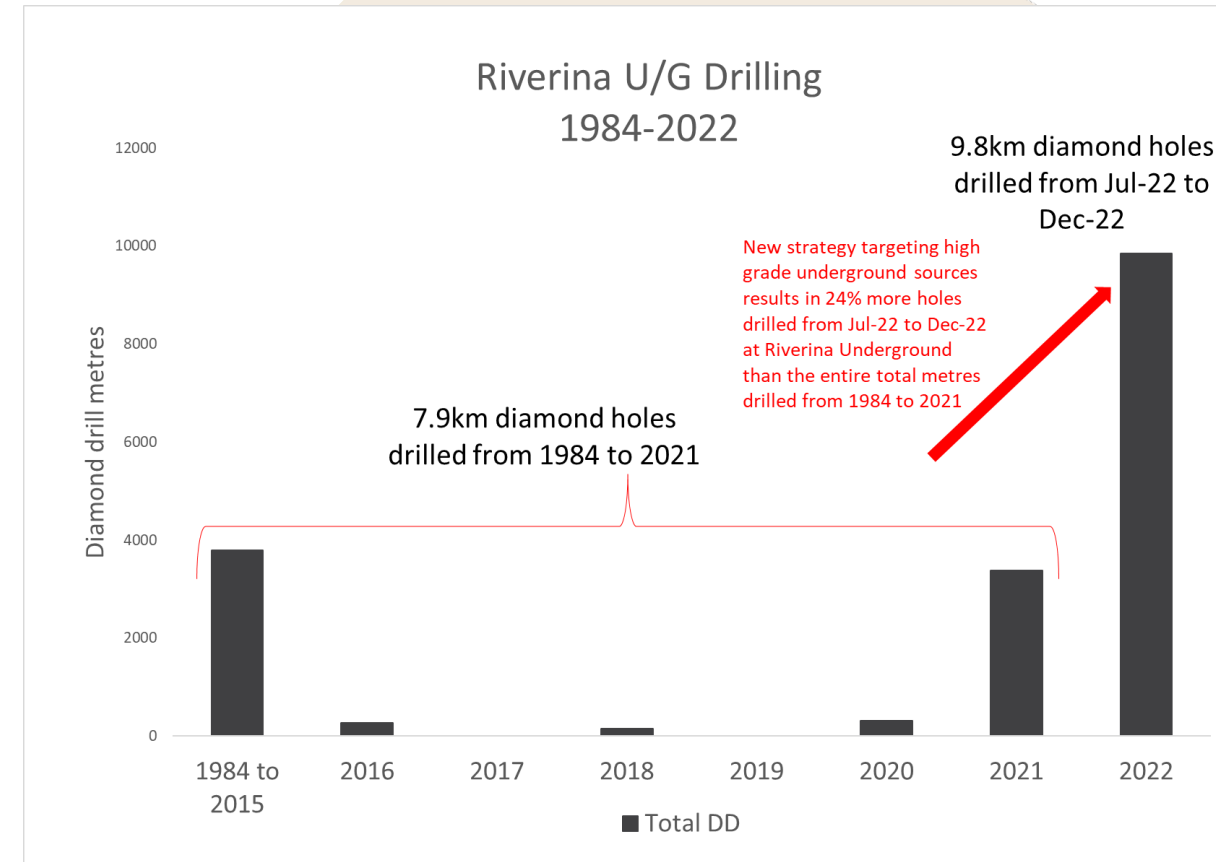
**Sustainable Performance - Guided by our Values; Delivered by our People**

# Riverina – First Exploration Priority



## 3-Year Strategy to focus on high-grade underground targets delivers quick success

- Riverina Underground Mineral Resource doubles to 303,000 ounces at 4.1g/t<sup>1</sup>
- New Resource is robust with minimum mining width of 1.6m applied
- Resource remains open in all directions, with Phase 2 of the exploration program to commence in March 2023
- Riverina underground maiden ore reserve of 73,000 ounces averages 4.3g/t, with potential for Reserve conversion only limited by drilling density
- Reserves calculated using gold price of A\$1,850/oz and using a minimum mining width of 2.2m in stoping
- The Reserve is primarily made up of the Main Lode mineralisation only, with the Murchison lode making up less than 3% of the Reserve due to it having an inferred classification in the resource. Conversion from resources into reserves is a key component of the in-fill grade control drilling
- The Phase 1 exploration program drilled 24% more holes in the 6 months from Jul-22 to Dec-22 than the entire amount of diamond drilling at Riverina Underground from 1984 to 2021

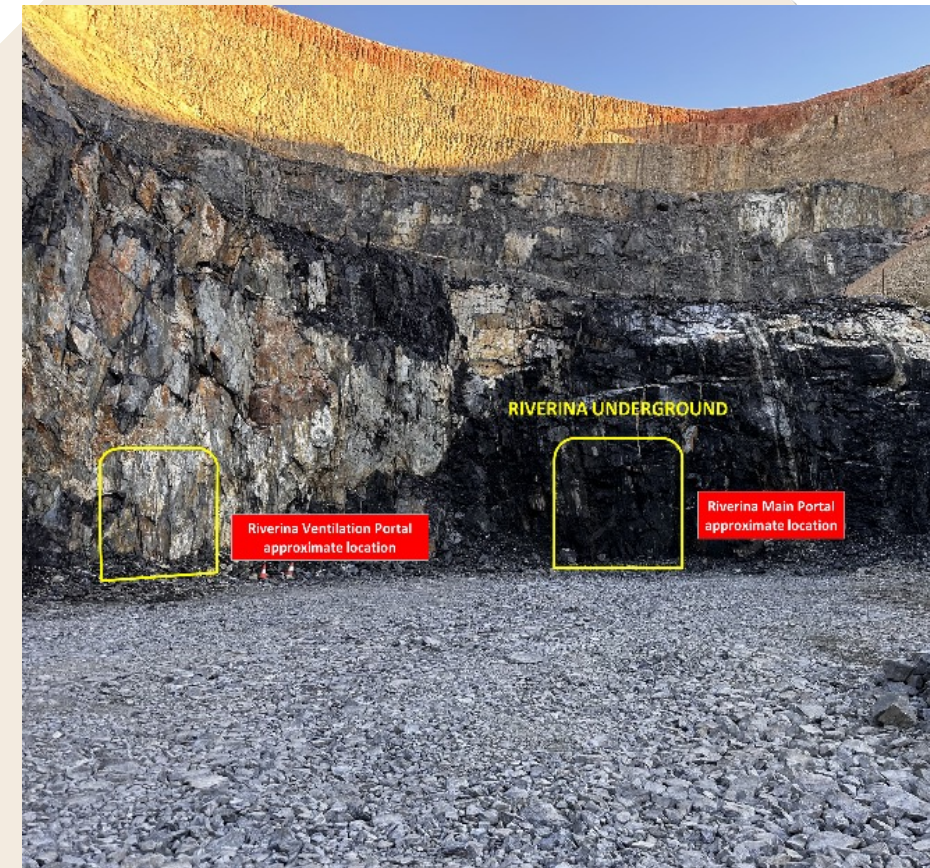
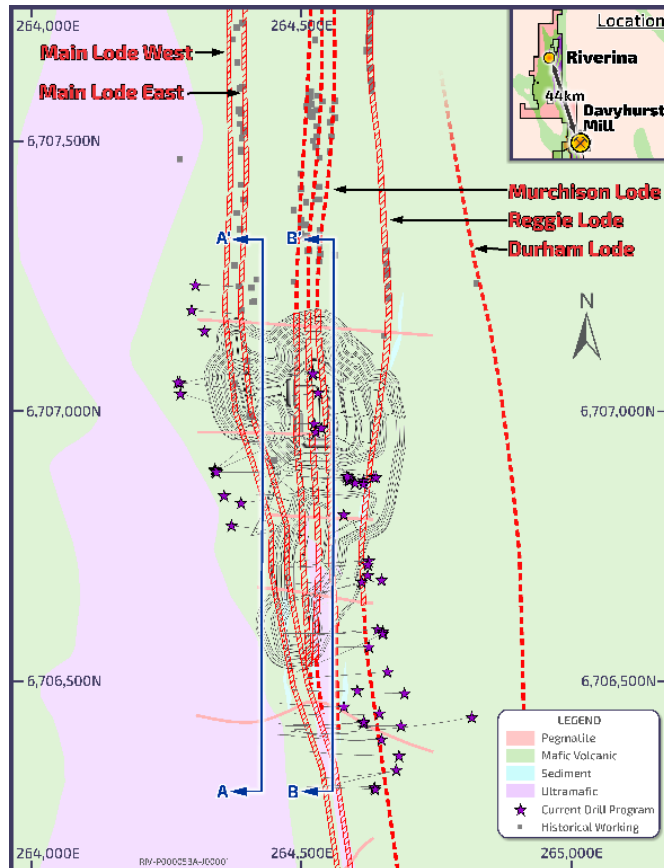


<sup>1</sup> For further details ASX Announcement dated 15 February 2023

# Riverina Underground – Preparing for mining

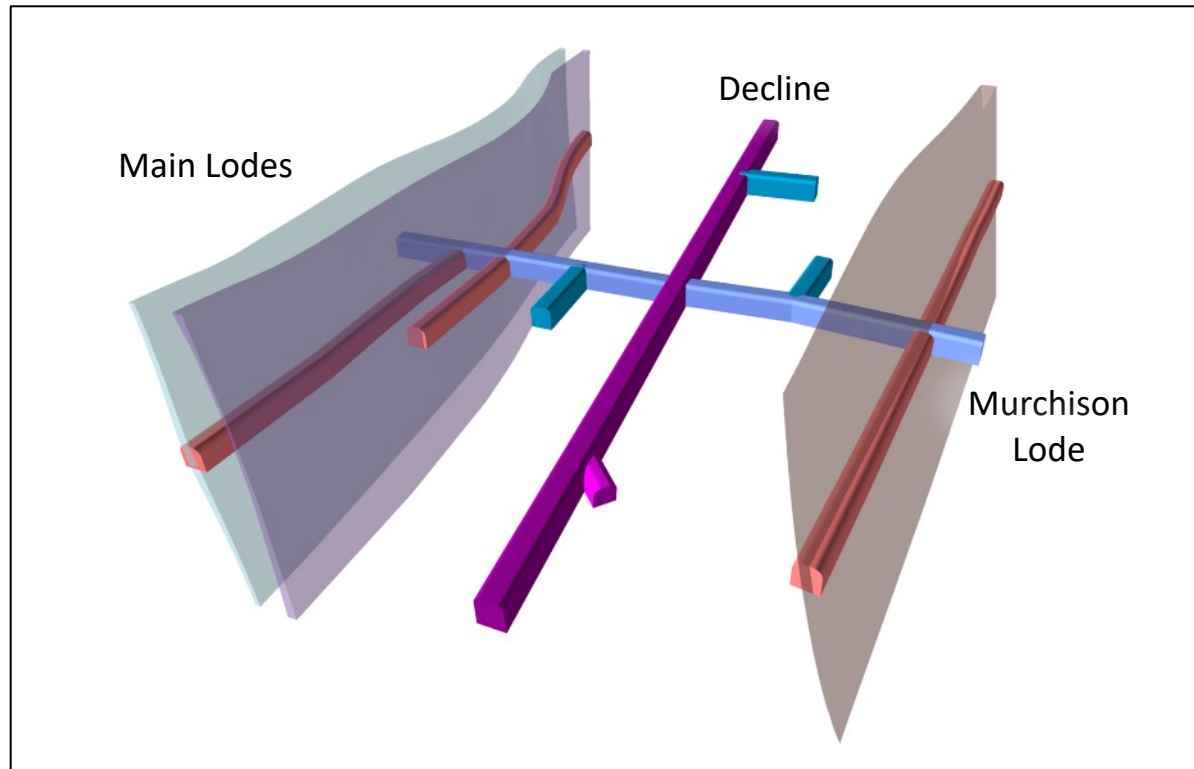
## Underground Ready

- Riverina pit mined down a further 15m to expose Main Portal and Ventilation Portal accesses
- Underground mining tender process is well advanced and expected to be completed in March 2023
- A mining commencement notice was submitted to DMIRS on 10 February 2023, therefore Ora Banda will be able to commence mining after 27 March 2023 (start date is subject to Ora Banda Board FID and underground contractor mobilisation)
- The investment case for the FID is expected to be presented to the Ora Banda Board in the March quarter and will include consideration of inferred material that has the potential to convert to Reserve with further drilling as well as Resource extensions





# Riverina – Ideal geometry for low capital and selective mining



Conceptual design demonstrating parallel lodes accessed from one centralised decline

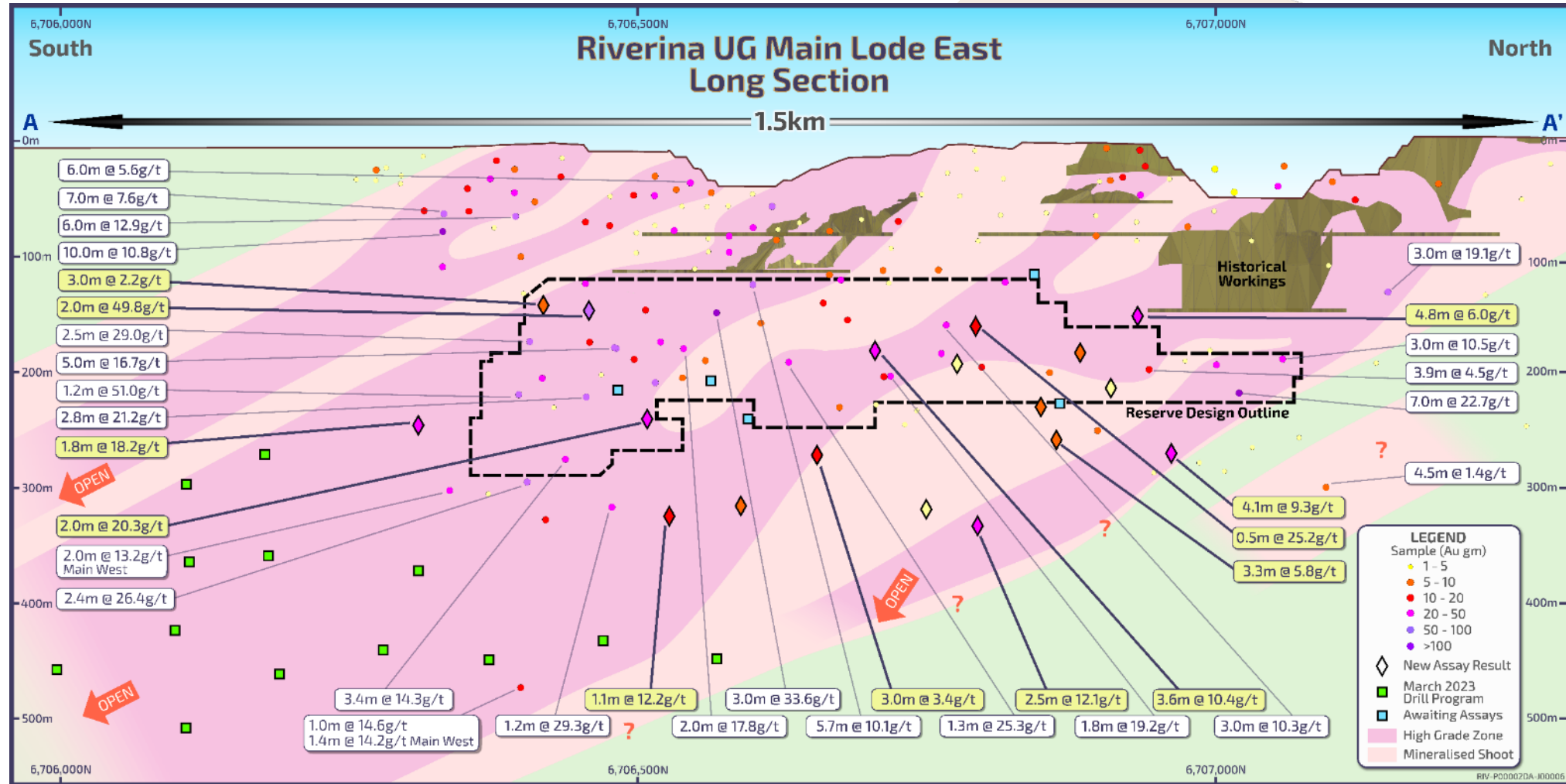
## Benefits of central decline and parallel lodes

- Identifying high-grade extensions of the Murchison Lodes could have substantial benefit to the economics of the Riverina Underground
- Single decline and infrastructure can access both lodes at the same time, improving equipment efficiency and increasing production rates
- Grade control drilling can be done from stockpiles as the decline advances which allows for fast and accurate geological data and the ability to identify high-grade trends
- Access drives off the decline can easily be optimised to ensure they are targeting the highest grade ore, such that waste development is minimised
- Additional extraction sequencing options will increase ability to mine to a consistent grade
- Mining rates >600ktpa of ore achievable off one single lode, additional lodes provide optionality and upside

# Riverina Underground – Early days in a big system



- Main Lode East Reserve outline compared to mineralisation envelope and Phase 2 drilling campaign
- Phase 2 program is targeting extensions to the mineralisation envelope further south and at depth
- In the past 37 years, only 17.8km of diamond drilling has been drilled in this deposit
- Remains open in all directions and further drilling is expected to continue to unlock this deposit

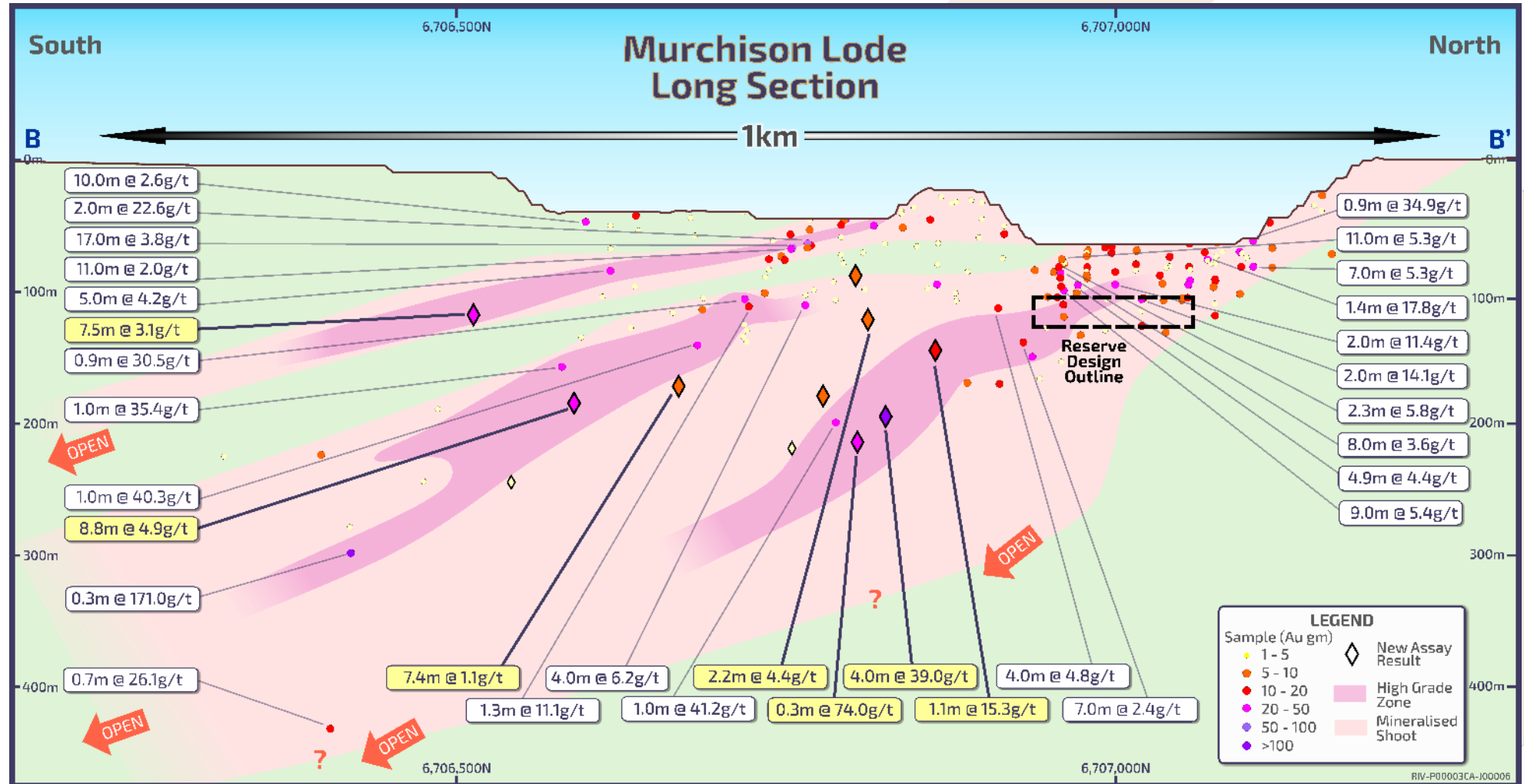


Refer ASX announcement dated 19 Oct 2022, 17 Apr 2018, 29 Jul 2019, 26 Aug 2019, 16 Sept 2019, 8 Oct 2019, 9 Apr 2020, 10 Aug 2020, 8 Mar 2021, 2 Aug 2021, 7 Dec 2022 and 10 Feb 2023 for further drilling details.

# Riverina Underground – Murchison lode



- Murchison lode is parallel to the main lode and can be accessed off the same decline
- **Only 3% of the Reserve is from Murchison due to it having an inferred classification in the resource**
- Conversion from resources into reserves is a key component of the in-fill grade control drilling
- **Mineralisation is open in all directions and proven over 800m strike and 400m depth**



Refer ASX announcement dated 19 Oct 2022, 17 Apr 2018, 29 Jul 2019, 26 Aug 2019, 16 Sept 2019, 8 Oct 2019, 9 Apr 2020, 10 Aug 2020, 8 Mar 2021, 2 Aug 2021, 7 Dec 2022 and 10 Feb 2023 for further drilling details

# Missouri Open Pit

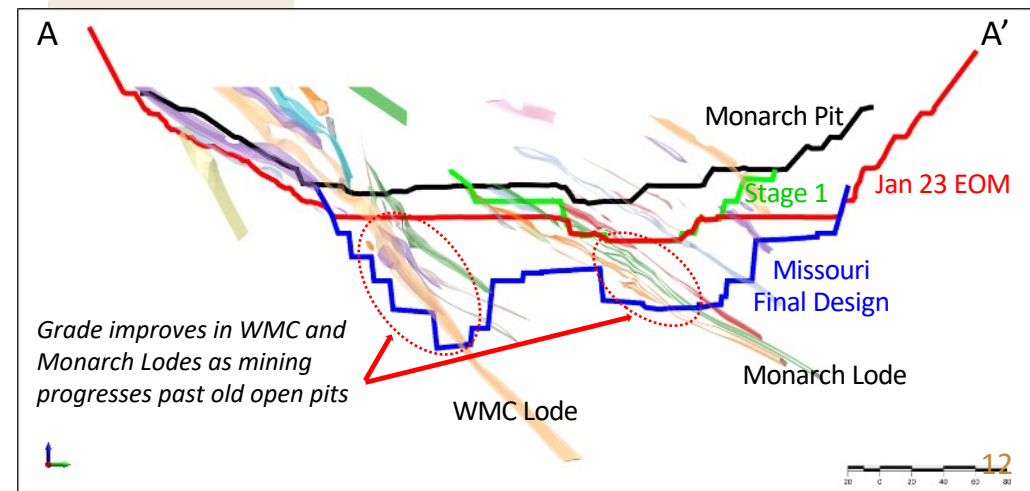
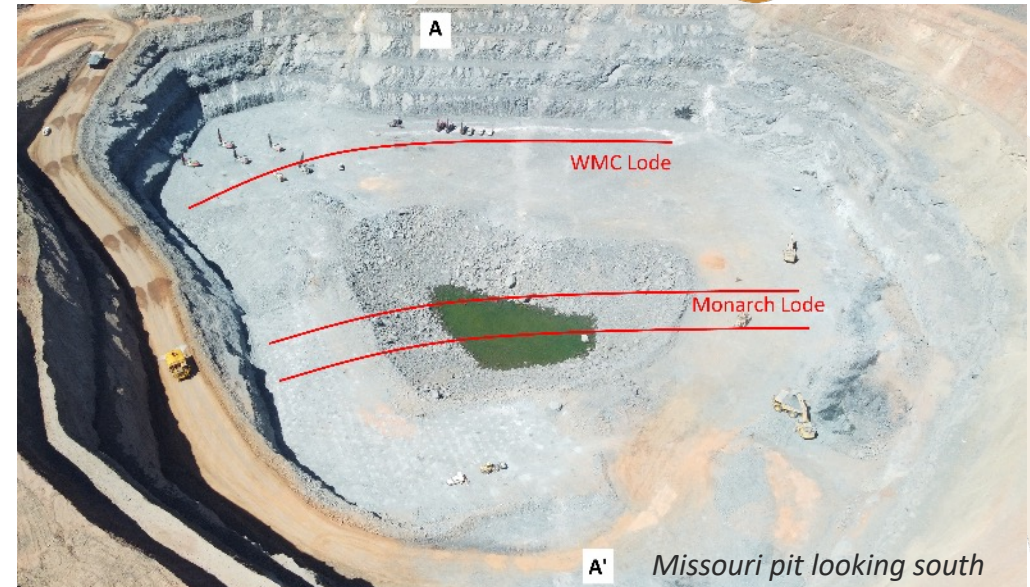
## Missouri Pit (Siberia Trend) – current mining front

Operational improvements took effect in the December quarter with key achievements including:

- Mining productivity increased by 27%
- Mined ounces increased by 33%
- Processed tonnes increased by 11%, including record tonnes milled of 109kt in December
- Reduction in mill scats by ~97%

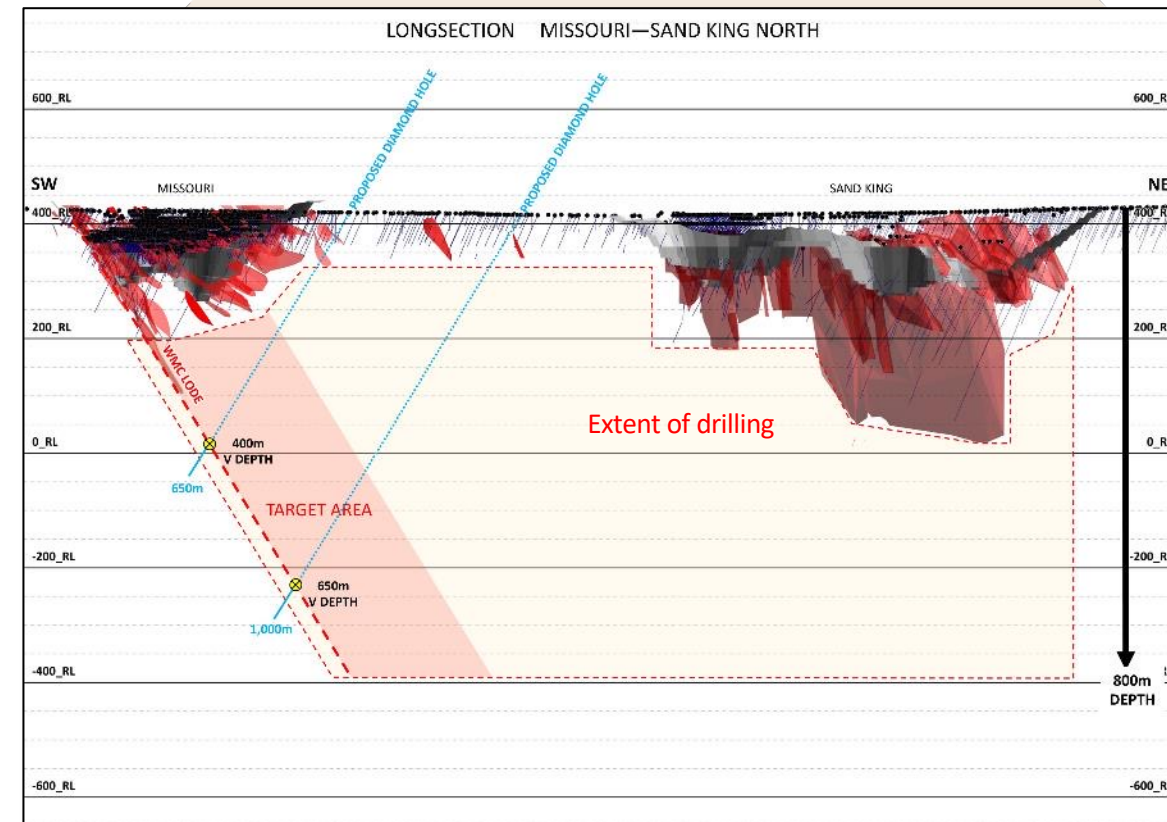
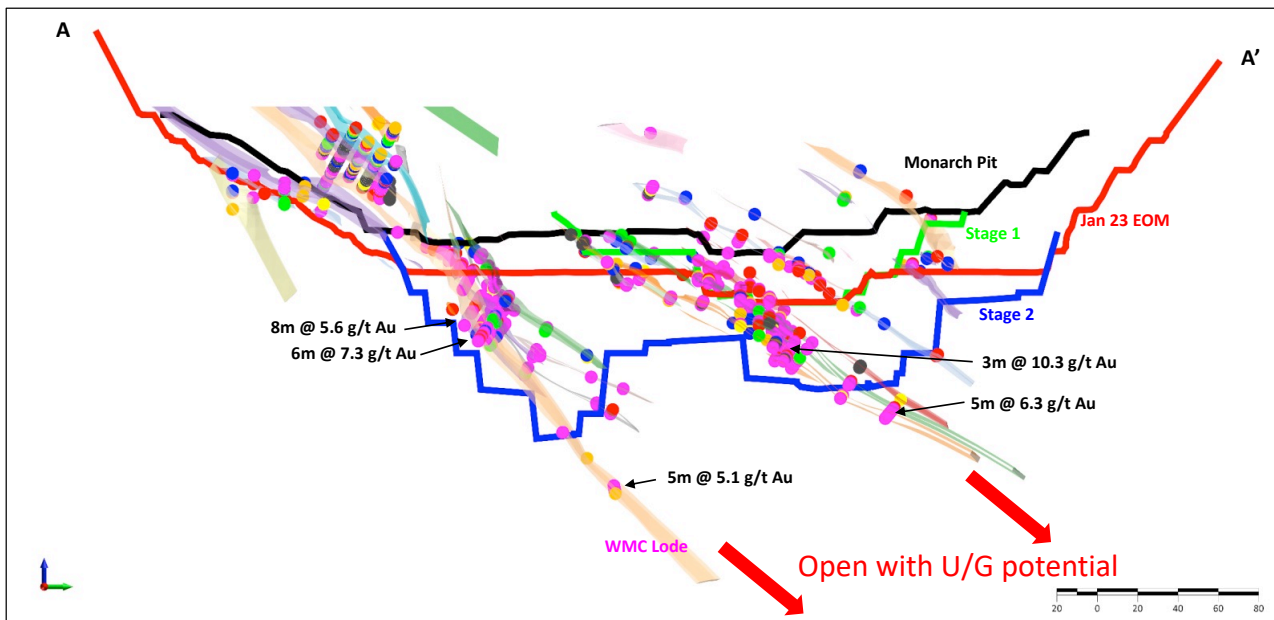
To date, mining at Missouri has been around 2 older open pits, the Monarch pit and the Stage 1 Pit

The mine is now into fresh ore below the Monarch pit on the WMC Lode, and close to fresh ore at the base of the Stage 1 pit – this transition is the key catalyst to the grade increasing from 1.6g/t to 2.1g/t as well as the reduction in strip ratio



# Missouri - Next Target for Underground

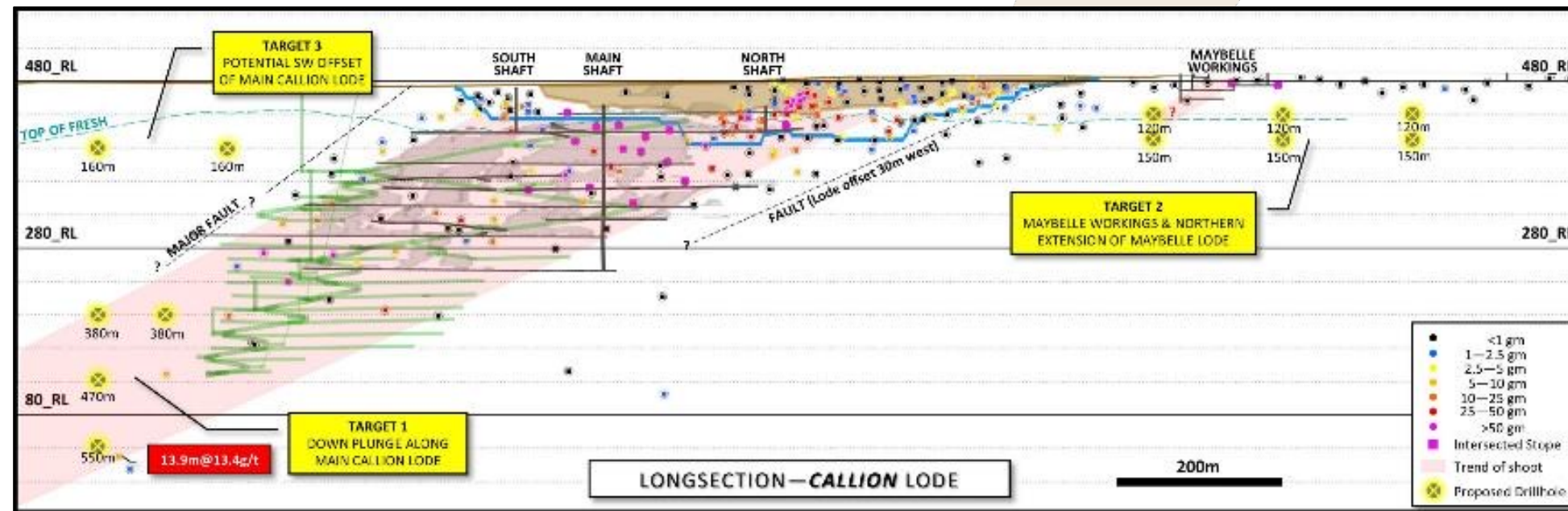
- Historically no drilling under the Missouri Open Pit looking for underground potential
- Deepest holes are only ~200m deep and demonstrate grades and widths supporting an underground
- Current mining in the open pit show the WMC lode and Monarch lodes are continuous down dip and into the walls of the pit
- H2 exploration programs will target extensions of these lodes



# Callion – advanced underground target

## Callion Underground

- Detailed structural mapping in recent weeks has fundamentally changed our geological model → **“Boots-on-ground” approach paying dividends**
- Drilling to commence in H2 targeting down plunge extension as well as along strike & stacked repeats to the high grade Callion underground
- Current Resource of ~107koz at 4.9g/t, including underground Resource of ~80koz at 5.8g/t<sup>1</sup>
- Previous production of ~91koz at 10.2g/t; including ~74koz at 15.8g/t from underground<sup>2</sup>



<sup>1</sup> Refer ASX Announcement dated 1 August 2022

<sup>2</sup> Historical production figures sourced from internal Company Records (updated from Monarch Gold 2008)

<sup>3</sup> Refer ASX announcement dated 24 October 2016, 10 January 2017, 20 February 2017, 31 August 2017, 28 January 2020, and for further drilling details refer to the Company's website; Project Overview [www.orabandamining.com.au](http://www.orabandamining.com.au)

# Infrastructure Well Established

## Infrastructure replacement cost of ~\$180M<sup>1</sup>

### 1.2Mtpa processing plant (~\$120M replacement)

- 3 stage crushing circuit
- Twin 1.3MW ball mills
- Gravity + CIL circuit
- Thickener & tailings facility
- Onsite assay lab

### 220 room camp (~\$20M replacement)

### Support infrastructure (~\$40M replacement)

- 7.5MW gas power station with diesel backup
- Connection to mains power
- Bore fields and pipeline
- Airstrip and haul roads
- Workshops, core shed and administration buildings



<sup>1</sup> Company estimate based on current publicly available market rates for similar infrastructure

# Values – How We Operate

## We target Zero Harm

- Safety imbedded in all that we do
- Risks assessed and actively managed
- Sustainable environmental performance

## We are a Team with a Winning Mindset

- Plan to win - targets are known and achieved
- Every Person important to Team success
- Every Person accountable for their actions

## We Pursue Solutions with Intent

- Communication positive and respectful
- Empowered workforce that keeps improving
- Systems of work support high performance

## We Accept the Challenge to Create Value

- Develop our people to make a difference
- Achieve top 10% of industry performance
- Mediocrity is unacceptable





# Corporate Overview

## Capital Structure

|                                                    |             |              |
|----------------------------------------------------|-------------|--------------|
| Share Price <sup>1</sup>                           | A\$/share   | 0.095        |
| Shares on issue <sup>2</sup>                       | M           | 1,425.8      |
| Options & performance rights on issue <sup>2</sup> | M           | 122.3        |
| <b>Market Capitalisation<sup>1</sup></b>           | <b>A\$M</b> | <b>135.5</b> |
| Cash & bullion <sup>2</sup>                        | A\$M        | 22.2         |
| Debt <sup>2</sup>                                  | A\$M        | 11.0         |
| <b>Enterprise Value</b>                            | <b>A\$M</b> | <b>124.3</b> |

- Supportive major shareholder in Hawke's Point
- ~50% owned by Institutions<sup>2</sup>

1. As of market close on 14 February 2023
2. As of 31 December 2022
3. Commenced 4 July 2022
4. Commenced 30 September 2022

## Board of Directors

|                          |                                               |
|--------------------------|-----------------------------------------------|
| Peter Mansell            | Non-executive Chairman (Corporate Lawyer)     |
| Luke Creagh <sup>3</sup> | Managing Director (Mining Engineer)           |
| Alan Rule <sup>4</sup>   | Non-executive Director (Chartered Accountant) |

## Management

|                     |                                                    |
|---------------------|----------------------------------------------------|
| Gareth Jones        | Chief Financial Officer (Certified Accountant)     |
| Andrew Czerw        | General Manager – Resource Development (Geologist) |
| Simon Hillyard      | General Manager Operations (Geologist)             |
| Katherine Blacklock | General Manager People & Culture                   |



# The DRIVE to 100

17 Feb 2023

